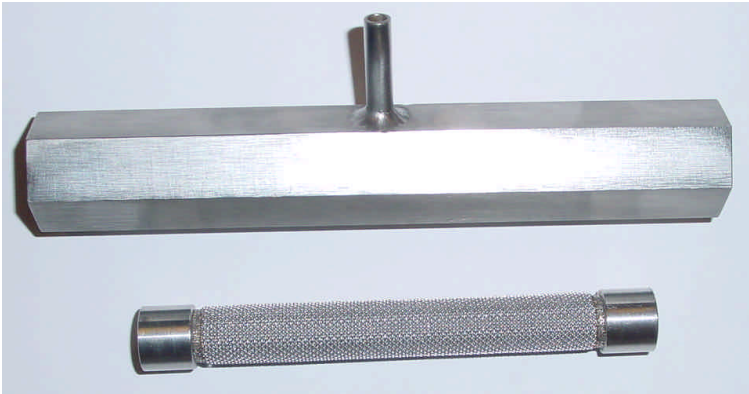


## In-line Filter for gas and liquid service



The unique fast loop seal-less flow-through design facilitates self cleaning and assures a fresh sample with a minimum time lag. All wetted parts are AISI-316 stainless steel. The filter element is easily removed for cleaning and replacement. Removing rating: see table.

### Materials of construction

- hardware: AISI-316 stainless steel
- filter element: sintered stainless steel wire mesh

### Connections standard unit

- inlet/outlet: 1/2" NPT female
- sample outlet: 1/4" OD tubing

### Design pressure

- housing: 75 Barg
- max. differential: 0,5 Barg

### Design temperature

- standard: 230°C
- high temp: 640°C

### High temperature execution

- 1/2" OD or 12 mm OD Swagelok

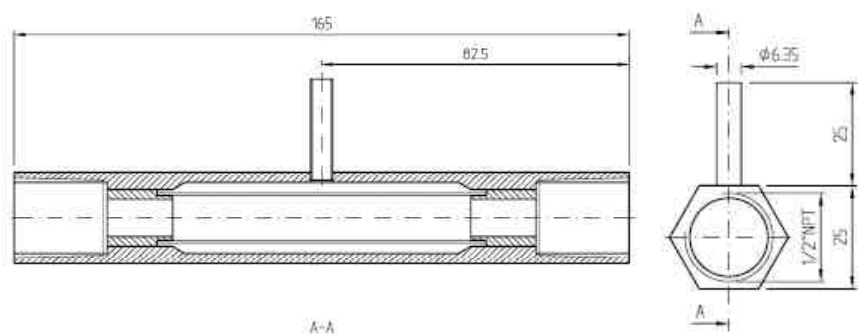
### Assembly no (order no)

612103-45	45 µm
612103-65	65 µm
612103-105	105 µm
612103-150	150 µm
612103-225	225 µm
612103-450	450 µm

### Pore size

### Replacement Element

612104-45
612104-65
612104-105
612104-150
612104-225
612104-450



*Interline Systems BV has adopted the policy of continuous product development. Although this bulletin has been compiled with great care, current standard executions may deviate.*

